

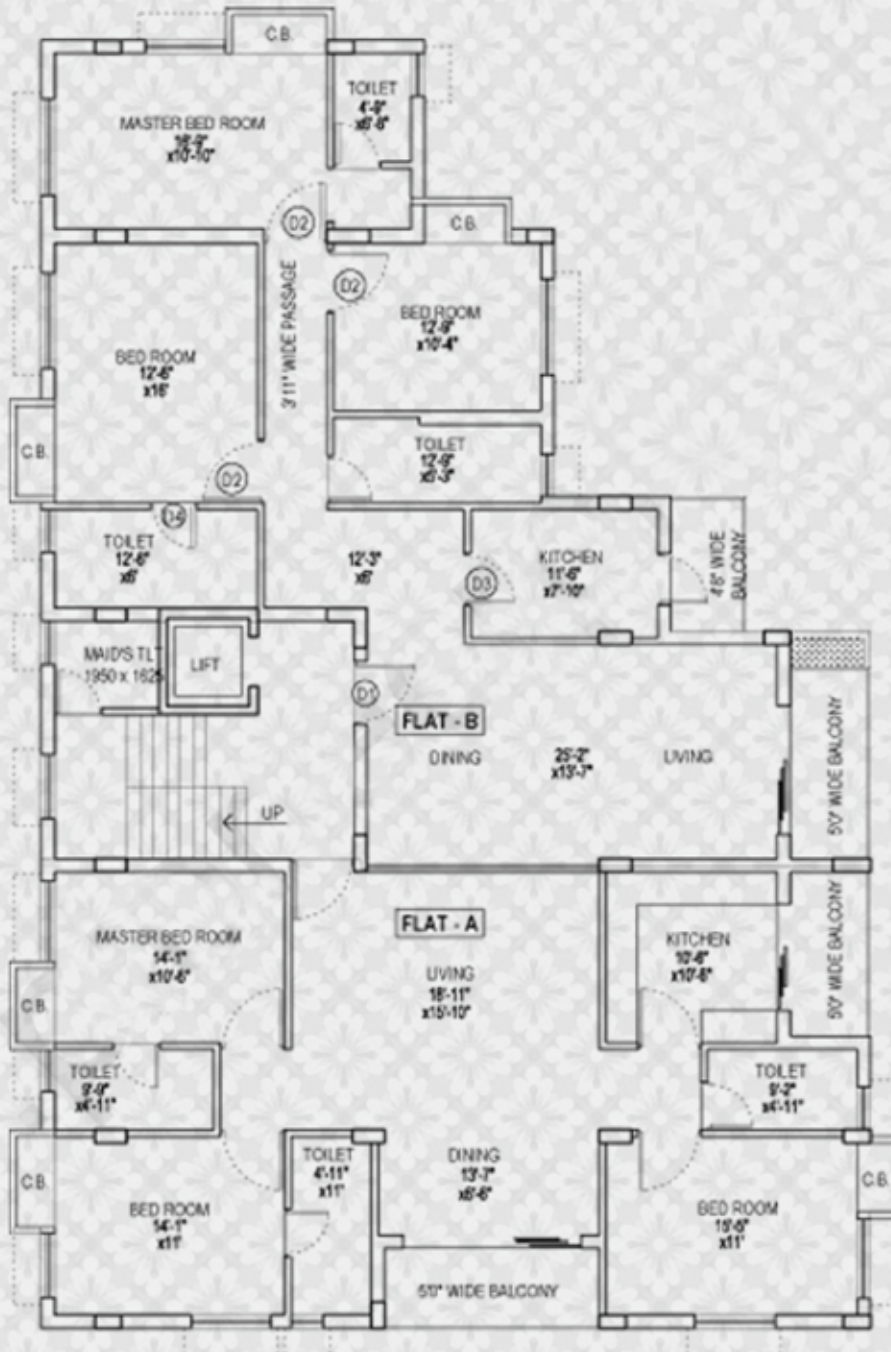
PRUDENT  
*Jai Shree*



# Ground Floor Plan



## Typical Floor Plan




Flat No.	Type	Area
A	3 BHK	1979 Sq.ft
B	3 BHK	2158 Sq.ft



## Specifications

- Foundation** : Masonry/RCC footings with anti-termite treatment in foundation and walls
- Structure** : RCC Columns 8"/10" thick external walls  
4"/5" thick internal walls
- Flooring** : Italian Marble in living room, dining room & bedrooms  
Ceramic Tiles in toilet  
Marble/Vitrified in kitchen
- Kitchen** : Granite Counter with Stainless Steel sink  
Ceramic tile dado ( up to 2 ft. height above counter top)
- Toilet** : Branded Ceramic tile up to ceiling heights  
Provision for hot and cold water supply  
Sanitary fittings of Hindware/Parryware/Roca or Equivalent make  
Elegant CP Fittings of Jaquar or equivalent make
- Windows** : Windows as per building facade with MS Grills
- Doors** : Main Entrance door solid wood with polish & night latch  
Other Doors of flush/panel type with polish or enamel paint
- Internal Walls** : Plaster of Paris
- Electricals** : Concealed copper wiring with latest modular switches  
AC, TV & Telephone points available in living dining & bedrooms  
Plug points and exhaust fan points available in kitchen & toilets


---



---

## Amenities

---



- Ground floor** : Adequate Parking space
- Drivers waiting lounge
- Common staff toilet
- Lobby** : Plush ground flr lobby with granite/marble flooring
- Intercom facility for additional security
- Elevator** : Otis (Automated)
- Generator** : 24 X 7 power back up available at additional cost
- Roof** : Landscape roof garden for common use

For further details & booking contact

[www.pioneerproperty.in](http://www.pioneerproperty.in)



Express Tower 4<sup>th</sup> Floor  
42A Shakespeare Sarani Kolkata 700 017

☎ + 91 98368 11111/ 📞 +91 33 40024002

✉ [sales@pioneerproperty.in](mailto:sales@pioneerproperty.in)